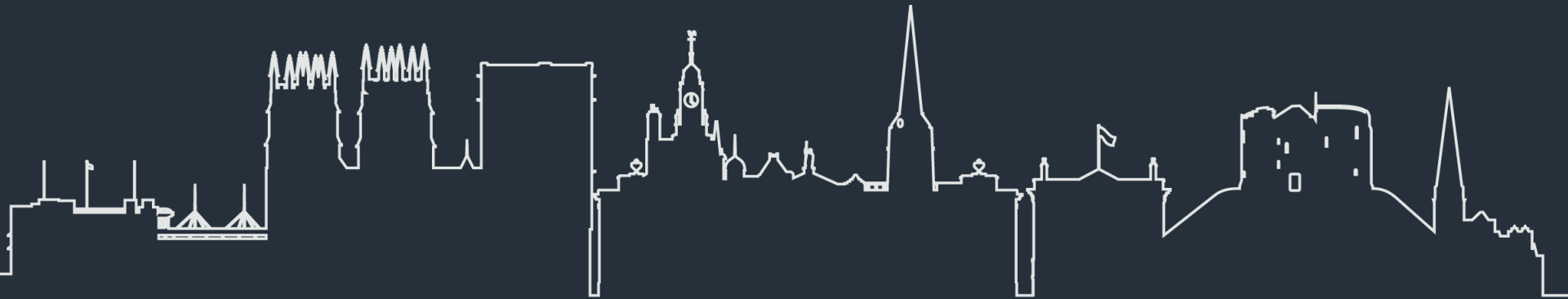


# Huntington Road (South) Danger Reduction & Multimodal Scheme

05/01/2026



# Huntington Road (South)

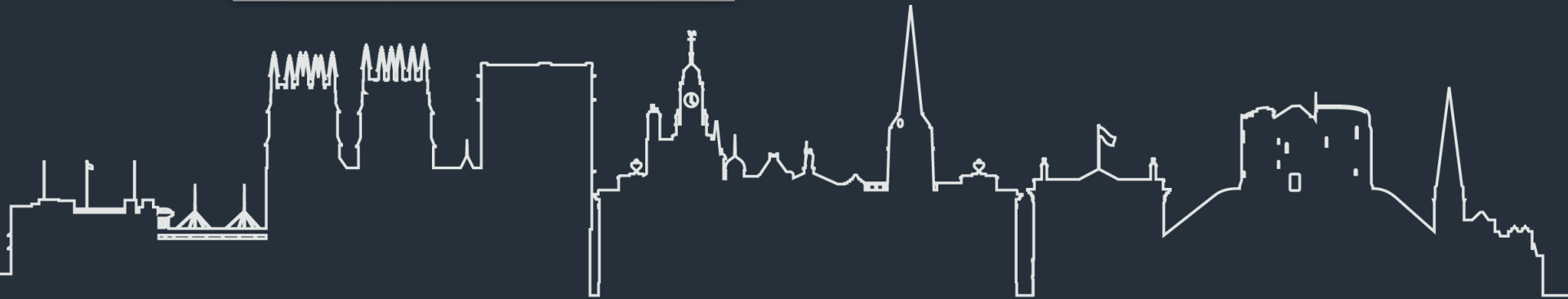
## Key concerns raised by residents:

- Damage-only incidents of parked vehicles being struck by passing vehicles.
- Apparent lack of road width for two-way traffic.
- Difficulty in parking in kerbside spaces.
- Inconsiderate behaviour of motorists.
- Speed concerns.
- Increased traffic volume.
- Insufficient pedestrian crossing facilities for school

# Investigation



Site defined as **Huntington Road**  
between **Lowther Street** and  
**Ramsay Close**



# Issues

## **Carriageway Widths**

- Narrow lanes and an increase in car widths.

## **Inappropriate Speed**

- Good compliance with existing limit, but speed is not appropriate for the environment.

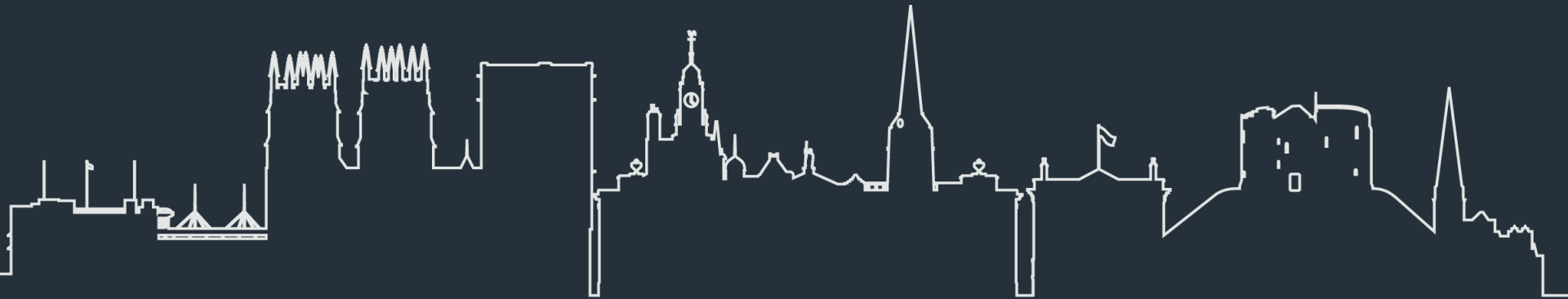
## **Lack of controlled crossing points**

- Two uncontrolled crossing points within the site.

## **Non-continuous pedestrian route**

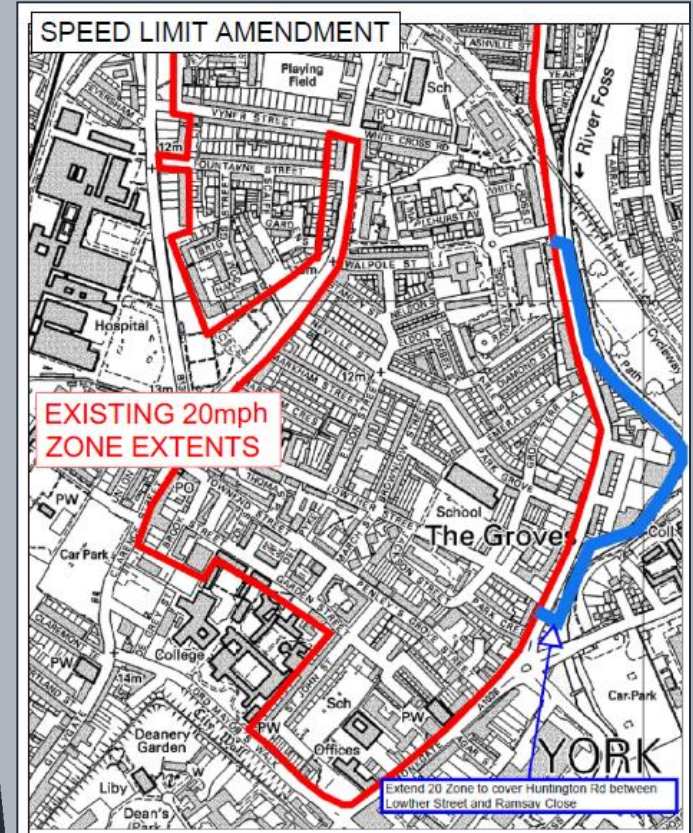
- Missing length of eastern footway outside 92 and 92a.

# Project Proposals: Outline Design



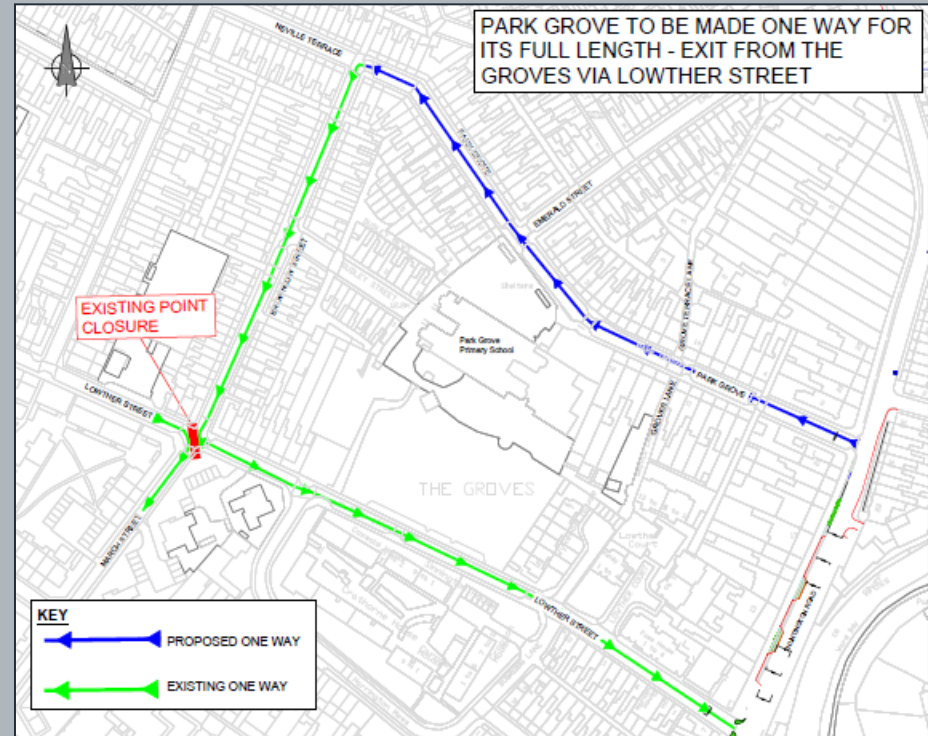
# 20mph Zone Extension

- Extend the 20mph Zone for The Groves to include a length of Huntington Road, Gladstone Street and Dennison Street.
- Vertical traffic calming measures to be installed along Huntington Road.



# Park Grove – One-way

- Park Grove to be made one-way entry to reduce conflict at the junction.
- Lowther Street and Park Grove junction mouths narrowed and raised tables introduced to give footway users more priority.
- Relocation of a parking bay on Neville Terrace to allow larger vehicles to more easily navigate the bend.



# Footway extension

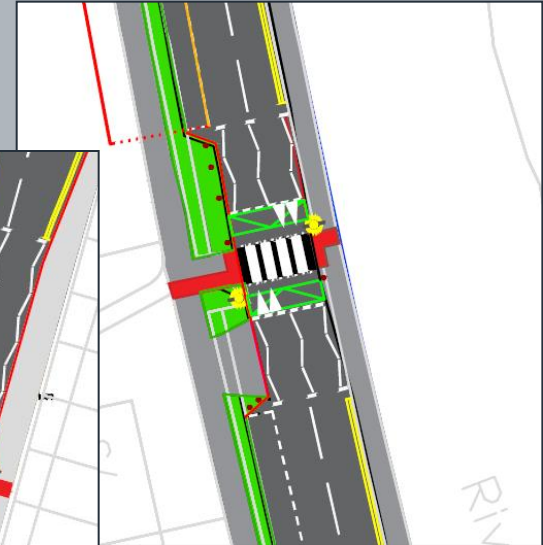
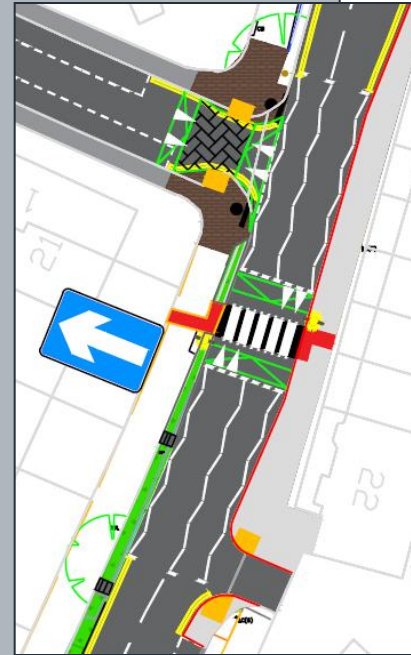
- Provision of a footway link to complete the missing section of footway on the eastern side of the road.
- Inbound bus stop relocated to accommodate.





# Zebra Crossings

- Upgrade existing northern crossing point to a raised zebra crossing.
- Remove parking bay outside 22-38 Huntington Road, widen footway and provide a raised zebra crossing.
- Loss of parking at both locations mitigated with changes to parking bays throughout the area.



# Parking changes

Two options for parking provision between Lowther Street and Park Grove.

## Option 1:

- Remove all parking (16 spaces).
- This allows the retention and minor widening of the verge.
- With mitigation measures this option reduces the available parking in the area by 4 spaces.



# Parking changes

Two options for parking provision between Lowther Street and Park Grove.

## Option 2:

- Localised carriageway widening between Lowther Street and Park Grove.
- Provides extra width for passing vehicles with the trees and small areas of verge to be retained within buildouts.
- With mitigation measures this option increases parking provision by 1 space.



# Parking changes cont'd

- Various parking mitigation measures throughout the scheme extents to minimise the impact on parking provision.
- Feedback on proposed changes to the parking arrangements for residents will have a significant impact on how we proceed with the scheme.
- No decisions have been made on changes to ResPark zones or pay and display parking options in the area at this point.



**Working together** to improve and make a difference

# Additional proposals

- Bolt down traffic islands to protect parking bays between Park Grove and Grove Terrace Lane.
- Cycle symbols through the bend to encourage cyclists to adopt a primary position and discourage overtaking.
- Minor pedestrian improvements and additional signage as required.

# Questions



**Working together** to improve and make a difference

# Next Steps



Official consultation planned to start in late January.  
Activities to include:

Extensive leaflet drop to The Groves area.

Digital engagement.

Drop in events.

